

# COOPERATIVE CONNECTIONS



## Co-ops Power Next Generation

**How Co-ops are  
Engaging Youth**  
Pages 8-9

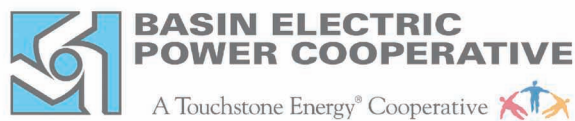
**811: Call Before  
You Dig**  
Pages 12-13



Ever wonder where your electricity comes from?  
Take the Basin Electric Tour and see it firsthand!

Sign up today to reserve your seat! West Central Electric is again offering our member-owners a Basin Electric Bus Tour. The tour will be held on August 26-28, and members will have the opportunity to see the electrical system that provides electric power to their homes and farms. You'll see Basin Electric Co-op Headquarters, Antelope Valley Station electric generating plant, Coteau Properties Freedom Mine, Great Plains Synfuels Plant, and Transmission System Maintenance Menoken outpost. This is an excellent opportunity for members to view their vast electrical system "up close." You'll make new friends and see some fascinating sites. Best of all, the trip is free! If you are interested in such a trip, please fill out the form below and send it to our main office at West Central Electric PO Box 17 Murdo, SD 57559. For additional questions, please call us at 605-669-8100!

<b>West Central Electric / Basin Bus Tour</b>	
Names:	
Address:	
City/State/Zip	
Cell Phone Number	





**COOPERATIVE  
CONNECTIONS**

**WEST CENTRAL  
ELECTRIC**

(USPS No. 018-988)

**President**

Shad Riggle, Hayes

**Vice President**

Kenneth Miller, Draper

**Secretary/Treasurer**

Marty Hansen, Philip

**Directors**

- Rich Bendt, Kadoka
- Mike McQuiston, Fort Pierre
- Kevin Neuhauser, Midland
- Paul Patterson, Draper
- Jim Smith, Vivian
- Cliff Uthe, Presho
- Jim Willert, Belvidere
- Attorney
- David Larson, Chamberlain

**CEO/Manager**

Jeff Birkeland, Murdo

**Our Mission is to Provide  
Safe, Reliable Service  
to our Member Owners.**

West Central Electric Cooperative, Inc., is an equal opportunity provider and employer.

**Call 605-669-8100  
24-hour Dispatching**

WEST CENTRAL ELECTRIC COOPERATIVE CONNECTIONS is published monthly by West Central Electric Cooperative, Inc., PO Box 17, Murdo, SD 57559. Periodicals Postage Paid at Murdo, SD 57559 and at additional mailing offices. Electric cooperative members devote \$1 from their monthly electric payments for a subscription. Nonmember subscriptions are available for \$18 annually. POSTMASTER: Send address changes to: West Central Electric Cooperative Connections, PO Box 17, Murdo, SD 57559; telephone 605-669-8100; fax 605-669-2358; e-mail wcec@wce.coop; Web site: www.wce.coop; Facebook: www.facebook.com/WestCentralElectricCooperative

Design assistance by SDREA

# Linemen are Wired for Service



**Jeff Birkeland**  
CEO

In the quiet hours before dawn breaks, while many of us are still nestled in our beds, linemen begin their day, often clad in flame-resistant clothing, safety goggles, rubber gloves and thick, heavy boots.

They are the individuals who epitomize dedication to service in its purest form. As we celebrate Lineworker Appreciation Day on April 14, this is an important moment to reflect on the essential role they play in our daily lives.

Amid towering utility poles and power lines, lineworkers exhibit a strength that goes far beyond the physical. Whether battling inclement weather, troubleshooting technical problems or navigating treacherous heights, linemen demonstrate resilience and a quiet determination to keep our lights on, our homes comfortable, and our communities connected.

West Central Electric crews travel across our five-county service territory, building, maintaining and repairing parts of our local system. Their extraordinary skills ensure our homes remain connected to the grid, businesses stay operational, and emergency services remain accessible – a lifeline that connects us all.

In moments of crisis, when the lights go out and we find ourselves in the dark, linemen emerge as beacons of hope. Their swift response restores normalcy, offering reassurance in times of uncertainty. Whether repairing storm-ravaged power lines or ensuring continuity during emergencies, their unwavering commitment illuminates life when we need it most.

West Central Electric linemen also answer the call beyond the boundaries of home. Our crews travel to fellow co-ops, near or far, when widespread outages occur and additional support is needed. Cooperation among cooperatives is one of our seven guiding principles, and no one embodies this core commitment better than linemen.

This month, as we celebrate the remarkable men who ensure our reliable power, let's recognize their unwavering dedication to the local communities they serve.

The next time you flip a switch, please take a moment to remember those who make it possible – linemen, who are wired for service and dedicated to illuminating life.



# Distracted Driving

National Highway Traffic Safety Administration

Distracted driving is any activity that diverts attention from driving, including talking or texting on your phone, eating and drinking, talking to people in your vehicle, fiddling with the stereo, entertainment or navigation system – anything that takes your attention away from the task of safe driving.

Texting is the most alarming distraction. Sending or reading a text takes your eyes off the road for five seconds. At 55 mph, that's like driving the length of an entire football field with your eyes closed.

You cannot drive safely unless the task of driving has your full attention. Any non-driving activity you engage in is a potential distraction and increases your risk of crashing.

## Consequences

Using a cell phone while driving creates enormous potential for deaths and injuries on U.S. roads. In 2022, 3,308 people were killed in motor vehicle crashes involving distracted drivers.

## Get Involved

We can all play a part in the fight to save lives by ending distracted driving.

**APRIL**  
**Distracted Driving Awareness Month**  
an **nsc** initiative  
National Safety Council

## Teens

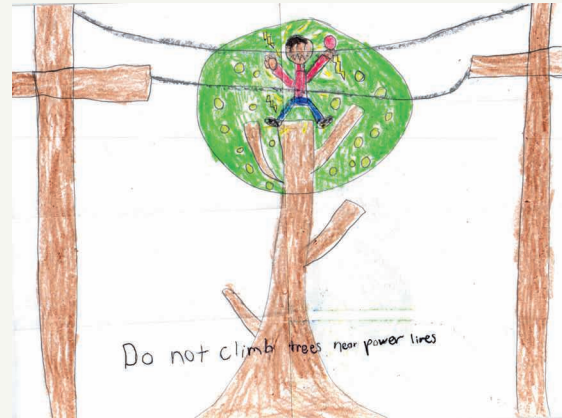
Teens can be the best messengers with their peers, so we encourage them to speak up when they see a friend driving while distracted, to have their friends sign a pledge to never drive distracted, to become involved in their local Students Against Destructive Decisions chapter, and to share messages on social media that remind their friends, family and neighbors not to make the deadly choice to drive distracted.

## Parents

Parents first must lead by example – by never driving distracted – as well as have a talk with their young driver about distraction and all of the responsibilities that come with driving. Have everyone in the family sign the pledge to commit to distraction-free driving. Remind your teen driver that in states with graduated driver licensing (GDL), a violation of distracted-driving laws could mean a delayed or suspended license.

## Educators and Employers

Educators and employers can play a part, too. Spread the word at your school or workplace about the dangers of distracted driving. Ask your students to commit to distraction-free driving or set a company policy on distracted driving.



**“Do not climb trees near power lines.”**

## Naomi Krcil, Age 7

Naomi cautions readers about the dangers of climbing trees near power lines. Thank you for your picture, Naomi! Naomi's parents are Andrew and Andrea Krcil, members of Charles Mix Electric Association.

Kids, send your drawing with an electrical safety tip to your local electric cooperative (address found on Page 3). If your poster is published, you'll receive a prize. All entries must include your name, age, mailing address and the names of your parents. Colored drawings are encouraged.



# Let's Have BRUNCH

## EASY BREAKFAST MUFFIN

### Ingredients:

2 cups all-purpose flour  
1/2 cup granulated sugar  
2 tsps. baking powder  
1/2 tsp. salt  
2 eggs (beaten)  
1/2 cup vegetable oil  
1/2 cup milk

### Method

Preheat the oven to 400°F. Line a 12 cup muffin tin with paper liners or spray each cup with cooking spray. In a mixing bowl, combine flour, sugar, baking powder and salt.

Add in eggs, oil and milk and mix only until combined, don't beat or over mix or they will be dry! Fold in 1/2 cup mix-ins if desired.

Scoop into prepared muffin tin and bake for 15 to 18 minutes or just until golden and a toothpick comes clean. Serve with butter and jam.

**Lyon-Lincoln Electric Member**

## UMM BRUNCH

### Ingredients:

Scallops  
English Muffin  
Eggs

### Method

Soak scallops in cold water in fridge for two hours, pat dry, sauté in butter and garlic until opaque (approx. 4 min). Put on toasted English muffin. Cook poached eggs in 10-inch skillet with 1 tbsp. vinegar (3-5 mins.) Remove with slotted spoon and drain on paper towel. Add to the scallops and top with Hollandaise Sauce.

### Hollandaise Sauce:

Cut 1/2 stick butter into thirds. In double boiler, combine 1 piece of butter and 3 egg yolks, 1 tbsp. lemon juice and 1 tbsp. water. Place it over boiling water and cook while whisking rapidly. Add remaining butter one at a time, continue to cook. Add salt and pepper to taste.

**Kari Reder**  
**Northern Electric Member**

## SAUSAGE AND EGG TACOS

### Ingredients:

4 oz. breakfast sausage, casings removed  
1 tbsp. perfect pinch roasted garlic bell pepper seasoning  
6 eggs  
2 tbsps. milk  
1 tbsp. butter  
6 small flour tortillas, warmed  
1/4 cup shredded Mexican cheese blend  
1 med. ripe avocado, peeled, pitted and sliced

### Method

Heat medium skillet on medium-high heat. Add sausage and Seasoning; cook and stir until sausage is browned and crumbled. Remove sausage from pan; keep warm. Drain fat from pan.

Beat eggs and milk in medium bowl with wire whisk. Melt butter in same skillet on medium heat. Add egg mixture; cook and stir until eggs are firm.

For each taco, place one tortilla on plate. Top with eggs, sausage, cheese and avocado. Sprinkle with additional seasoning, if desired.

**McCormick.com**

Please send your favorite recipes to your local electric cooperative (address found on Page 3). Each recipe printed will be entered into a drawing for a prize in December 2025. All entries must include your name, mailing address, phone number and cooperative name.

# Prep Now for Summer Savings



**Miranda Boutelle**  
Efficiency Services  
Group

**Q:** How can I prepare my home for lower energy bills this summer?

**A:** Spring is in the air, and before you know it, summer will be here. There are many ways to get a jump-start on preventing summertime high bills and energy waste.

Add your cooling equipment to the spring-cleaning checklist. An annual tune-up by a heating, ventilation and air conditioning (HVAC) professional should include refrigerant charge, airflow adjustment and condenser and evaporator fan coil cleaning. This helps maximize your system's efficiency and the lifespan of your equipment, reducing wasted energy and costs.

Some HVAC companies offer discounts for cleaning equipment during the months when they are less busy. Once high temperatures hit, they are more likely to be swamped with calls to repair or replace broken equipment. Signing up for an annual maintenance plan may provide additional savings.

A dirty furnace filter can waste energy by causing your system to work harder. Make sure you have a stack of replacement filters ready to go so you are more likely to replace them as needed. Filters tend to be less expensive if you buy them in bulk. When I recently shopped for filters for my home,



the per-filter price was about half as much for a 12-pack as it was for a two-pack.

Ductless heat pumps, also known as mini-splits, have a filter in the indoor unit, or head, which should be cleaned. If you clean the indoor filter yourself, be sure to turn the unit off before removing the filter and let it dry completely before putting it back.

As we transition from cool to warm weather, keep an eye on your thermostat settings. The Department of Energy recommends setting cooling temperatures to 78 degrees when you are home and higher when you are away. You can save as much as 10% a year on heating and cooling by adjusting your thermostat 7 to 10 degrees from its normal setting for eight hours a day.

One way to feel cooler is using fans in the room you're in during the day or when you're sleeping. Using a fan can make a warm room feel cooler without having to adjust the thermostat. Remember: fans cool people, not rooms. Turn fans off in unoccupied rooms.

If your ceiling fan has a reverse function, make sure you flip the switch so it blows air down into the living space. The reverse function is great at circulating warm air in the winter, and you can maximize the comfort benefit of a fan by switching the flow of air seasonally.

Another consideration before summer hits is your home's impact on peak load—when demand for electricity is highest. This typically occurs in the morning when people are getting ready for work and school, and in the evening when they return home. Your electric cooperative must manage the energy use of all its consumers, which can be a challenge. Consider starting the dishwasher before you go to sleep or starting a load of laundry outside of your utility's peak times.

If you have a photovoltaic solar system, run your dishwasher or do laundry when your system produces the most electricity, which is typically during the sunny mid-day.

Cooking outdoors in summer is a great way to save energy. Using the stove or oven heats your kitchen, which requires more energy for cooling. Get the grill cleaned now so that you are ready to enjoy outdoor cooking.

Incorporate these tips into your summer prep to save energy and lower your bills.



# From Dell Rapids to Nashville

## Julie Eddy Remembers South Dakota Roots

Jacob Boyko

jacob.boyko@sdrea.coop

Amid the hustle and bustle of Nashville's legendary music scene, where neon lights shine over the iconic clubs of "Honky Tonk highway," a rising star from South Dakota is making her mark.

Known for songs including "On My Way to You" and "Two Truths & a Lie," Julie Eddy captivates the music scene with her distinctive voice, heartfelt songwriting and energizing performances.

But before the glamour of Music City came years of hard work, dedication and an unshakeable desire for doing what she loved.

Years ago, in the small eastern South Dakota town of Dell Rapids, 10-year old Julie Eddy discovered her love of music.

"My sister had come home after learning how to sing the national anthem at school, and she was singing it for me," Julie recalled. "And of course, as a big sister, I told her, 'You're doing it wrong, this is how you do it.' My mom came around the corner and asked which one of us was singing, and I told her it was me. She said, 'wait a second, that's actually pretty good!'"

With a little encouragement, Julie signed up to sing the national anthem at Dell Rapids high school basketball games.

"That was the first time I had ever sang in front of an audience," she said. "I just loved it – the adrenaline of it, the feeling of it."

It came as no surprise to Julie's mom, Teri, who says her daughter was never shy about performing, regularly enthraling the family living room with performances of Disney movie scenes.

Watching Julie's singing progress from basketball games, to church, to charities, then to weddings, Teri realized that Julie's performances weren't just a hobby anymore.

"That was when we really knew that she had kind of an amazing talent, and really the ability to get up in front of people and perform," Teri explained.

When Julie turned 21, she started singing in bars and restaurants across South Dakota a couple of weekends each month. In 2018, looking for more venues, she moved to Minneapolis.

"I was at every bar, every place that I knew that had music, like begging somebody to get me shows," Julie chuckled. "I was playing four, sometimes five nights a week on top of my day job."

Julie's lucky break came at a songwriting workshop when she entered a writing contest. As a winner, she was invited to Nashville to write with some of the industry's top writers.

In Music City, Julie knew she was home, and in 2021, she



Photo by Ari Lyon

moved to pursue her singing career full time.

"I know it sounds corny, but I feel like I wasn't really given a choice," Julie added. "It was just in me, and I fell in love with it."

Since then, Julie has recorded an album, numerous singles, and has become a regular performer in the Nashville music scene.

But diving headfirst into the music industry wasn't without difficulty, Julie found.

"Where I grew up, everyone helps everyone," she explained. "Dell Rapids almost felt familial and you could trust everyone. The world outside Dell Rapids is not like that and sometimes you learn that the hard way."

Julie continued, "In this industry, they say you're going to hear 'no' 100 times before you hear one 'yes,' and you're going to get the door slammed in your face and the rug pulled out from underneath you. I took it with a grain of salt, but it's absolutely true. Those stories you hear about somebody making it overnight or being discovered in a bar have at least 10 or 15 years of work behind them."

But beyond all of the perks of Nashville's music industry, Julie's motivation to sing is a little bit closer to home. It's thinking back to when she was a little girl, driving with her dad in his red Chevy Trailblazer across the plains of eastern South Dakota listening to her old favorites – Shania Twain, Trisha Yearwood and Sarah Evans, for example – as she sang every word, feeling inexplicably happy in those precious moments.

"People will send me videos of my song playing through their car radio, and it's like the most surreal feeling in the world," Julie said. "And I wonder, what if there's a little girl doing that to my song, the same way I fell in love with music?"

There's also some surreality for Teri at times; moments like watching hometown neighbors load onto a bus to watch Julie perform on tour, or when a new single releases and she learns every word, singing along to a voice she cherishes so deeply.

"Julie inspires me, because no matter what anyone says, she has followed her heart and that has led her to the success she has," Teri said. "She's always believed in herself, even at hard moments in her life, but you just knew she would figure it out. That's a pretty amazing thing to see in your kid."



# FROM CELEBRATION TO INSPIRATION

Megawatt welcomes members to the football tailgate party hosted by West River Electric.  
Photo by Amanda Haugen

## How Electric Co-ops Are Powering the Next Generation

**Frank Turner**

frank.turner@sdrea.coop

April marks Lineman Appreciation Month, the perfect time to spotlight the essential role that electric cooperative employees play in their communities. In line with their commitment to education and community involvement, electric cooperatives are celebrating lineworkers through youth engagement initiatives, and it all stems from one of the electric cooperatives' seven cooperative principles: concern for community. For years, programs such as Cooperatives in the Classroom have provided schoolchildren with innovative, hands-on learning opportunities, demonstrating the critical work electric cooperatives perform in their communities.

Whether it's engaging youth through a Neon Leon safety demonstration or taking students to explore Basin Electric's energy infrastructure during the SDREA Youth Excursion, electric cooperatives across the state are constantly finding new and exciting ways to engage the youth within their communities and inspire the next generation. Below are two new avenues for spurring youth engagement in cooperatives across the state:

### Megawatt Mascot

Is it a bird? Is it a plane? No, it's Megawatt, Rushmore Electric Power Cooperative's newest lineman mascot. This summer, select electric cooperatives in western South Dakota are suiting up to introduce Megawatt – a friendly-faced lineman adorned with a hard hat, safety gloves and

bright red cape – to their members.

“The goal is to get younger kids to start thinking about linemen in a certain way – almost larger than life and the backbone of the electric cooperative,” said Rushmore Electric Chief Marketing Officer Matt Brunner. “The hope is that it translates into them considering the lineman profession when they get older.”

Megawatt has already made his debut at several member appreciation events, bringing high-energy fun to parades and tailgates as a true champion of the cooperative spirit. So far, Brunner said the mascot has left a big impression.

“The kids and adults have loved it, and the interactions have been great,” Brunner said. “If nothing else, it's unique. People are constantly asking, ‘Who is that?’ The costume does a great job of starting the conversation: what is a lineman, and what do they do?”

Beyond lineworkers, cooperatives offer a diverse range of career paths.



From engineers to accountants, the cooperative world is full of exciting roles that include opportunities in communications, where professionals share the cooperative's achievements and member services, where employees work directly with the community to meet their needs.

Brunner said he expects the idea to continue gaining momentum over the coming months with new avenues of appreciation for linemen and a better understanding of the day in the life of a lineman, as well as other exciting careers in the electric cooperative industry.

## STEM Gains Steam

Jennifer Gross, education and outreach coordinator at East River Electric Power Cooperative, has inspired classrooms for years with a variety of engaging demonstrations, covering everything from science to safety. Last year, Gross introduced a new activity to spark curiosity while incorporating STEM – an approach to education that integrates science, technology, engineering and mathematics into learning. The result led to a crafting activity where kids use simple materials to fashion their own wind turbine.

“We are always trying to come up with new ideas for students,” Gross said. “Incorporating STEM into this project seemed like a natural fit because both teachers and students are very receptive to it.”

The idea is straightforward. Students construct a small-scale turbine from wooden dowels, fins, and a motor capable of generating power. Once completed, they connect their tiny turbine to a multimeter, which measures the energy generated. Instead of relying on natural wind, students use a fan to simulate a windy day. By altering their model turbines, students can find the optimal design for the best output of energy. And just like that, students can step into the role of engineers.



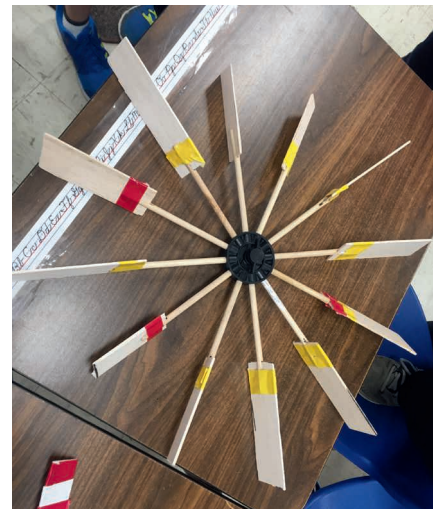
Megawatt is joined by U.S. Air Force personnel enjoying the Annual Base Picnic.  
Photo by Amanda Haugen

Gross said the students and the project have a lot in common. Once the building begins, the students' minds begin to whirl – just like a turbine. The activity prompts question after question: Why does the wind blow? How does a wind turbine work? How does the shape and weight of the blade influence the experiment?

“The students enjoy being engineers for this project,” Gross said. “They enjoy having the freedom to choose their materials and design. There's no right or wrong way to do it, and they enjoy that. I mention to the students that careers in wind energy are in high demand and some are 4-year degrees and others are fewer years, but the push for renewable energy sources is growing and our state produces plenty of wind.”

Whether it's through a hands-on activity or an engaging mascot, cooperatives aim to not only educate but inspire, ensuring that today's students can become tomorrow's linemen, engineers, communicators or member service representatives. By

sparkling curiosity and introducing young people to the world of cooperatives early on, they're opening the door to careers that keep communities powered and connected.



This is just one example of how students create wind turbines using materials such as balsa wood, foam, card stock, cardboard and paper cups.  
Photo by Jennifer Gross

# Call 811 Before You Dig



**Scott Kittelson**

Manager of  
Operations

Spring is an optimal time to dream up and achieve your landscaping masterpiece, or perhaps you plan to build a new deck to enjoy those cool summer evenings. If any of your

spring projects require digging – such as planting trees or shrubs or setting posts – remember to dial 811 (800-781-7474) first.

Underground utilities, such as buried gas, water, communications, and electric lines, can be a shovel thrust away from turning a project into a disaster.

Play it safe by dialing 811 to find out where utility lines run on your property. Your call will be routed to a local “One-Call” center. Tell the operator where you plan to dig and what type of work you will do, and affected local utilities will be notified.

“South Dakota Law Chapter 49-7A requires that anyone who engages in any type of excavation provide advance notice of at least 48 hours, excluding weekends and holidays, to the South Dakota One-Call System. Excavation is defined as, “any operation which earth, rock, or other material in or on the ground is moved or otherwise displaced by means of tools, equipment, or explosives”. Gardening to a depth of 12” and agricultural tilling to 18” are exempted by statute.”

In a few days, a locator will arrive to designate the approximate location of any underground lines, pipes, and cables. These areas will be marked with flags or

paint, so you’ll know what’s below. Then, safe digging can begin.

Although many homeowners tackling do-it-yourself digging projects are aware of “Call Before You Dig” services, most don’t take advantage of them. A national survey showed that only 50 percent of homeowners called to have their lines marked before starting digging projects, according to the Common Ground Alliance (CGA), a federally mandated group of underground utility and damage prevention industry professionals. CGA data also shows that an underground utility line is damaged every six minutes in the U.S. because someone decided to dig without first dialing 811.

Even simple tasks like installing a new mailbox post can damage utility lines, disrupt service to an entire neighborhood, harm diggers, and potentially result in fines and repair costs.

Never assume the location or depth of underground utility lines. There’s no need: the 811 service is free and can be called 24/7. This will prevent the inconvenience of having utilities interrupted and help you avoid serious injury. For more information about local services, visit [www.sdonecall.com/homeowners](http://www.sdonecall.com/homeowners). A link will take you to the South Dakota Homeowner Portal to process your locate online.

Please remember that the utility may not have underground lines on your property. You might have “privately-owned” facilities that the utility cannot locate, such as lines that run from the meter to the house or lines between buildings. Privately-owned lines can include water, electricity, communications, gas and other types. Consequently, they are not registered with the South Dakota 811 Center. You may have to hire an electrician or other independent locating company to mark those lines.

Remember to call 811 (800-781-7474) so you won’t need to call 911.







# EV UPDATE

## DC Fast Charging Costs



**Jessie Tucker**  
Member Services

As we made it through another winter with the Ford F150 all-electric Lightning, we thought it would be a good time to share an update. In much of this article, we are going to dive into charging costs while traveling the state. As mentioned in previous articles, many factors play a role in the battery range, especially driving speeds, outside temperature, and wind conditions.

Many of the local co-ops work at the SDREA booth during the Black Hills Stock Show. The Sunday that I worked, it was particularly cold. The temperature was nearly single digits, and I thought it would be another good test for the Lightning. There was virtually no wind in the morning when I left Murdo, but the cold weather was still a factor.

During the morning drive, the Lightning averaged 1.3 miles per kWh at 80 mph on I-90 with its 131-kWh battery. When I arrived at the Electrify America charging station near Target, I was at 27% battery capacity. The 32-minute charge got the battery percentage to 75%, but while charging I was more than a little surprised by the cost.

After the 6.2% sales tax was added, the 74.3 kWh charge ended up costing \$50.50. This is \$0.68 per kWh!

You might be wondering how this cost compares to a similar combustion engine vehicle. Let's look at the cost comparison to a gallon of gas. Currently, the cost for gas here in Murdo is \$2.85 a gallon, and we have another 2022 F-150 (with the 3.5-liter EcoBoost) that averages 18 miles per gallon on I-90 at 80 mph. At \$0.68 per kWh for the lightning, the same 18-mile

distance would cost \$9.41 versus \$2.85 for one gallon of fuel. That is 3.3 times the cost of a very similar gas vehicle in these winter conditions!

After doing the winter comparison, we thought we should check to see how that charging cost looks in summer. During the warmer summer months, the F-150 Lightning does get a better range. At 80 mph during the warmer months, the Lightning averages 1.8 miles per kWh. It would cost \$6.80 to drive the same 18 miles. That is still 2.4 times the cost of the \$2.85 fuel!

This is only one example of charging costs, but we do have multiple Electrify America charging stations in our state. There are also other brands, and I would recommend checking into their own charging costs before going on a trip.

After seeing these charging costs, I am convinced that the only way it makes sense to own an F150 Lightning in our area is if you can charge at home for commuting during the day, and for some of you it still does. If you can charge overnight at your own house, it is still approximately half the cost of \$2.85 fuel.

Another thing to consider is planning the additional time to charge while you are on a road trip. That day trip to Rapid City to work at the Stock Show added another hour to my day. I also ended up charging for 16 minutes in Wall to ensure I had enough charge to make it home.

If you have any questions about electric vehicles and the pros and cons of how they work in central South Dakota, just give me a call at 605-669-8100.





# DIGGING SAFELY

**Call 811 Before You Dig Every Dig. Every Time.**

**Jocelyn Johnson**

jocelyn.johnson@sdra.coop

Every year, underground utility lines are damaged by homeowners and contractors who dig without calling 811. This single call is a crucial step in any project. Striking a water, gas or power line can cause serious injuries, costly repairs and service outages for an entire neighborhood. Whether you're beginning construction on a major project or are simply planting a tree, calling 811 before you dig is a free and simple solution to what could potentially be considerable damage.


## What is 811?

The South Dakota One-Call System, or 811, is a mandatory statewide

one-call notification system that was established by South Dakota Statute in 1993. 811 is now recognized as the national "Call Before You Dig" number in the U.S., designed to safeguard people and protect underground utilities. It's a free service that coordinates with your utility providers to help locate and mark underground lines.



Codi Gregg, executive director for South Dakota 811, said, "The main purpose of the program is to avoid digging into any utility and potentially causing a loss of life, loss of property, or any infrastructure buried in the ground."

"We are fully funded by the utilities who want to protect the services they provide," Gregg continued. "It is



**GET TO KNOW THE COLOR CODE**

Below are The American Public Works Association (APWA) Uniform Color Codes for temporary marking of underground utilities.

 <p>Proposed Excavation</p>	 <p>Electric</p>
 <p>Water</p>	 <p>Communication / CATV</p>
 <p>Reclaimed Water, Irrigation, Slurry</p>	 <p>Temporary Survey Marking</p>
 <p>Gas, Oil, Steam</p>	 <p>Sewer / Storm Drain</p>



South Dakota state law that you contact 811 two business days before you dig.”

South Dakota has underground utility lines for electricity, gas, water, sewage and telecommunications. Inadvertently hitting one of these lines could cause power outages, property damage, water contamination, gas leaks, legal liabilities and injury.

Gregg explained that when an excavator makes the 811 call before they dig, utilities receive the locate and have 48 hours to mark all lines in the designated area with color-coded flags or paint.

“If you happen to dig into a utility or find one that was not located while excavating, you have to report that to 811. If you happen to dig into a gas line or anything toxic, you must call 911 first, then 811.”

## How It Works

Contractors, homeowners, ranchers and farmers can easily make a request for underground utility lines to be marked by

following these steps before every project.

1. Call 811 or submit an online request at least 48 hours prior to your project.
  - Information can be found online at [www.sdonecall.com](http://www.sdonecall.com).
2. Wait for utility markings.
  - Utility companies will send professionals to mark buried lines using color-coded paint or flags.
3. Get locates on secondary or privately-owned lines if needed.
4. Check markings.
  - Confirm all utility companies listed on your ticket have responded to the request after the two-business days have passed.
5. Dig safely.

## Real-Life Examples of Hitting Underground Utility Lines

### Contractor Hits Unmarked Secondary Line

Tom Lundberg, member services manager from H-D Electric Cooperative in Clear Lake, S.D., gives the following account of a contact made to a secondary line:

“Normal situations start out like this – South Dakota 811 calls are made from an excavator or member (persons doing the work), and flags and paint go on the ground marking the underground services. This is a normal occurrence. However, some digs are more complicated, and there may be what we call secondary wires, pipes, sewer lines, etc. located in the dig area as well. The words primary and secondary are confusing to some people and they assume that all is well after the 811 call is made. Primary lines are owned and operated by the utility. Secondary lines are member-owned lines that are not marked by any utility. They must be marked by the member-owner of the property.

Unfortunately, we have had many of these lines hit during a dig, which makes it an emergency service call. One example is when we had a 600-amp service for a member that was damaged by a contractor. The call came in to us, and we responded to the site. We realized it could have been a very dangerous situation if the contractor would have entered the dig. Luckily, they guarded the hole until we arrived. The underground wires were extremely damaged, and the contact did not take out the transformer fuse or any kind of overcurrent protection. When I arrived, there was water in the hole, and I could hear the muddy water boiling. At that time, I assumed it was still energized. The first thing I did was turn the power off and assess the extent of the damage. The mud and water were so hot that I had to wait for a while for it to cool off. Repairs were made and everything was put back together. I double checked my work, then turned the power back on. This happened because secondary locates were not completed – resulting

in a three-hour delay for the business and a costly repair.

We have had many of these calls over the years, and we want to communicate that anyone digging for a project must ensure all the dig area is marked for primary and secondary functions (wire, pipe, gas, telephone, sewer).

Long story short, the impact of not marking all the dig area can cost you time, loss of production, money and even worse – injury or death.”

### Out-of-State Contractor Hits Underground Power Line

Mike Stadler, manager of electric operations from Grand Electric Cooperative in Bison, S.D., gives the following account of a contact made by company digging gravel:

“We had a dig-in a couple of years ago at a gravel pit. The county contracted a crushing company out of state to mine more gravel from an existing pit they had rights to. The crushing company started by digging test holes with a bulldozer. They would take the bulldozer and dig a hole about eight feet deep, just one dozer width wide, to see how good the gravel was before they committed to mining the whole area. We had underground cable around the pit. When they were exploring new areas to mine, they dug right through our cable and didn’t know it (keep in mind the test holes are 8 feet deep, and our cable is four feet deep). They dug the hole, went in and looked at the gravel, decided it wasn’t worth it, and covered the hole back up. Meanwhile, we had an outage.

When our crew began searching for the cause of the outage, they discovered the fresh dirt which was moved and had to dig it back up to fix it. When I asked the contractor why he didn’t call a locate, he stated the county superintendent said he didn’t have to because there was nothing there. They were very reluctant to pay the bill and thought the county should be liable. When I explained to them it was the law that all contractors are required to call 811, and it didn’t matter what the county told them, they paid the bill. We have since educated the county on 811 laws.”



A Greenhouse Tunnel at Cedar Creek Garden. Photo courtesy of Cedar Creek Garden.

# POWERING LOCAL FOOD

## Reliable Energy Keeps Greenhouses Growing

**Jacob Boyko**

[jacob.boyko@sdrea.coop](mailto:jacob.boyko@sdrea.coop)

For agricultural producers in tumultuous climates like South Dakota's, a little bit of electricity goes a long way.

Across rural areas of the state, some producers are using greenhouses as a way to extend their growing season, protect their crops from wind and hail, and provide their communities with fresh produce throughout the year.

Cedar Creek Gardens, co-owned by Cherry-Todd Electric members Bud Manke and Peggy Martin, is one such producer utilizing season-extending greenhouse structures. At the site in Mellette County, Martin is able to grow a

variety of vegetables throughout much of the year by utilizing greenhouse tunnels.

"We're in growing zone 4, but our tunnels add another zone of warmth," Martin explained. "With the thermal mass of the ground, plus with vegetables like cabbage being very cold resistant, we've sometimes harvested after December 1."

Cedar Creek Gardens wasn't always the green prairie oasis it is today, with its dozen greenhouses and more than 1,000 free-range chickens. The operation started off small – just enough to feed the family, but as they discovered their passion for gardening, its scale kept creeping up.

"The demand was there, so the operation just kept getting bigger and

bigger," Martin said.

Local greenhouses like Cedar Creek Gardens play an integral role in communities across South Dakota, ensuring food security for rural communities by providing locally-sourced produce for grocery stores, hospitals and restaurants.

"Local food and direct-to-consumer sales have seen a significant surge in popularity here in South Dakota," Martin added. "There's a clear trend of consumers wanting to know where their food comes from."

But without the extensive systems of grow lights, heating, irrigation – and the electricity that powers all of that – Martin says her operation wouldn't be sustainable.

Cedar Creek Gardens relies on electricity for several key aspects of the operation: irrigation to ensure crops get consistent water, grow lights to create optimal growing environment for transplants in the spring, and cooling



systems and storage facilities for the harvest.

“Reliable electricity from our rural electric cooperative is absolutely essential for Cedar Creek Gardens,” Martin said.

With electricity being so critical in every operation at the greenhouse, so too is the reliability. Any outage – summer or winter – risks an entire season of work.

“Cherry-Todd Electric is very aware of the amount of produce that we have, and they don’t think of us as ‘the middle of nowhere,’” Martin explained. “Cherry-Todd Electric is really good about calling us and saying they’re going to be working and let us know when the power will be off so we know to get stuff in the cooler and not open and close the doors.”

Cherry-Todd Electric’s manager, Tim Grablander, recognizes his members’ need for reliable and continuous energy, noting the co-op’s stringent practices including line patrolling, hazard recognition and line maintenance procedures to avert potential future problems.

“Cherry-Todd Electric’s mission is to not only assure that our power is available to each member, but that we are delivering power at the highest level of reliability as is physically possible,” Grablander said. “Our members depend on a consistent and reliable source of energy when and where it is needed. We also recognize the critical nature of power reliability for our healthcare providers, business owners, and our members with assistive medical needs. Reliability is our mission.”

But not every outage comes with the luxury of an advanced notice. When severe weather strikes, unexpected outages require quick thinking.

“When we had a blizzard and we lost electricity, we put the cows in with the plants to produce enough body heat so the plants didn’t freeze,” Martin recalled. “If we lose power on our electric heaters, we could lose all of our plants and not have anything to put into production. Power outages are also a significant risk to our cold storage facilities in the summer, any disruption can cause

the produce to spoil, which is a financial loss.”

Luckily, those outages are rare; Cherry-Todd Electric and its generation and transmission cooperative, Basin Electric Power Cooperative, emphasize reliable energy generation while other areas of the United States face strain on their electric grid, resorting to costly measures like rolling brown-outs.

“At Basin Electric, our all-of-the-above energy strategy ensures members have reliable, affordable power when they need it most by prioritizing dispatchable resources like coal and natural gas, alongside wind and solar,” said Chris Baumgartner, senior vice president of Member and External Relations for Basin Electric Power Cooperative. “We continue to invest in new generation while maintaining and optimizing our existing resources to meet demand, even during extreme weather conditions. These investments provide the baseload power and stability that businesses like Cedar Creek Gardens depend on – helping to sustain local economies and keep food on tables across the region.”

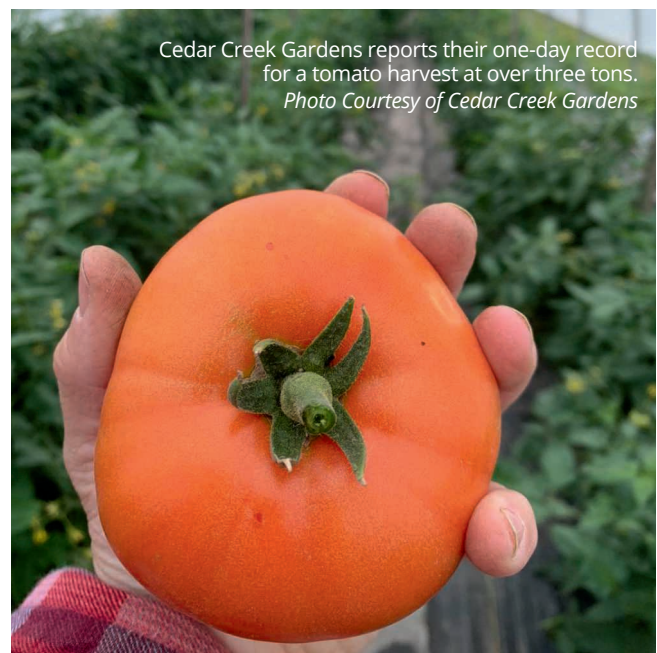
For greenhouses like Cedar Creek Gardens, energy rates directly impact the wholesale cost of her products that businesses and communities rely on. Utilizing efficient LED lighting, temperature sensors, timers and energy-efficient cooling methods help Cedar Creek Gardens further reduce their operational costs, passing the savings onto hungry diners.

By continuing to supply low-cost, reliable energy to producers like Cedar Creek Gardens, co-ops aren’t just powering rural America, but helping ensure food availability for communities across the region.

“People don’t realize we can grow for so long and so early,” Martin said. “We have tomatoes by the Fourth of July and people are shocked because they’re used to getting their tomatoes in August. The greenhouses allow us to do that.”



Peggy Martin, co-owner of Cedar Creek Garden.  
Photo courtesy of Cedar Creek Gardens



Cedar Creek Gardens reports their one-day record for a tomato harvest at over three tons.  
Photo Courtesy of Cedar Creek Gardens



**APRIL 11-12**  
**Forks, Corks & Kegs**  
**Food, Wine & Beer Festival**  
 Deadwood, SD  
 605-578-1876

*Photo courtesy of  
 Travel South Dakota*

To have your event listed on this page, send complete information, including date, event, place and contact to your local electric cooperative. Include your name, address and daytime telephone number. Information must be submitted at least eight weeks prior to your event. Please call ahead to confirm date, time and location of event.

**APRIL 3**  
**Viva Las Vegas**  
**McCrossan Banquet Auction**  
 5:30 p.m.  
 Sioux Falls Arena  
 Single Ticket \$100  
 Tables Available  
 Sioux Falls, SD  
 605-339-1203

**APRIL 3**  
**Bachelors of Broadway:**  
**Gentlemen of the Theatre**  
 7 p.m.  
 NSU Johnson Fine Arts Center  
 aberdeencommunityconcerts.org

**APRIL 4**  
**Mitchell Technical College**  
**2025 Alumni Gathering**  
**Cornhole Tournament**  
 5 p.m. Social  
 6:30 p.m. Tournament  
 The World's Only Corn Palace  
 Mitchell, SD  
 605-995-7342

**APRIL 4-5**  
**Annual Schmeckfest**  
 German Heritage Celebration  
 748 S Main St.  
 Freeman, SD  
 605-925-4237

**APRIL 4-6, 11-13**  
**Women Playing Hamlet**  
 April 4-5, 11-12: 7:30 p.m.  
 April 6, 13: 2:30 p.m.  
 Mighty Corson Art Players  
 Corson, SD  
 www.mightycorson.com

**APRIL 5-6**  
**Youth & Family Kids Fair**  
 Sat. 8:30 a.m.-4 p.m.  
 Sun. 12-4 p.m.  
 The Monument  
 Rapid City, SD  
 605-342-4195

**APRIL 6**  
**Hay County Jamboree**  
 2 p.m. Matinee  
 Gayville Music Hall  
 Gayville, SD  
 605-760-5799

**APRIL 11-12**  
**Junkin' Market Days Spring Market**  
 Fri. 4-7 p.m.  
 Sat. 9 a.m.-4 p.m.  
 W.H. Lyon Fairgrounds  
 Sioux Falls, SD  
 www.junkinmarketdays.com

**APRIL 24-26**  
**HuntSAFE Course**  
 Davison County Fairgrounds &  
 Mitchell Trap Club  
 Mitchell, SD  
 605-770-5555  
 gfp.sd.gov/hunter-education

**APRIL 27**  
**Country Roads**  
 2 p.m. Matinee  
 Gayville Music Hall  
 Gayville, SD  
 605-760-5799

**MAY 2-3**  
**SD Spring Square Dance Festival**  
 Fri. 7:30-10:30 p.m.  
 Sat. 9:30 a.m.-7:30 p.m.  
 Faith Lutheran Church  
 601 N. Cliff Ave.  
 Sioux Falls, SD  
 Call for events & times  
 605-360-2524

**MAY 3-4**  
**Prairie Village Events**  
 Sat. Consignment Auction  
 Sun. Season Opening  
 Madison, SD  
 www.prairievillage.org

**MAY 3**  
**West River Pheasants**  
**Forever Banquet**  
 5 p.m. Central Time  
 Draper Auditorium  
 Draper, SD  
 605-516-0143

**MAY 3**  
**American Legion Post 15**  
**Just Because It's Time to Dance**  
 6-10:30 p.m.  
 Tables Available  
 El Riad Shrine  
 Sioux Falls, SD  
 605-336-3470

**MAY 31**  
**Auto Parts Swap Meet & Car Show**  
 8 a.m.-2 p.m.  
 Brown County Fairgrounds  
 Aberdeen, SD

**Note: Please make sure to call ahead to verify the event is still being held.**