

COOPERATIVE CONNECTIONS



SOUTH DAKOTA STAR QUILTS

**Honoring Cooperative
Legacy With
Time-honored Tradition**
Pages 8-9

Rescuing Animals
Pages 12-13

Photo by Frank Turner

West Central Electric's Tax Contribution



Jeff Birkeland
CEO

Every June, West Central Electric pays a KWH tax to the local counties, which then distributes the money to the local school districts. This tax money is a substitute for the traditional property tax on our operating assets. Traditional property tax is based on buildings and land, something that does not undergo a lot of physical change in a calendar year. But West Central builds, retires, and upgrades our poles and wires on a daily basis, making it difficult and cumbersome to come up with a value to tax. In 1941, the legislators realized the problem and implemented a KWH tax as a substitute for the property tax on our poles and wires. As you know, KWH is how we measure the amount of energy/electricity someone uses. Historically, West Central has had growth in our energy sales so the amount of tax we pay has increased.

West Central Electric and Basin Electric, our power supplier, pay this tax. To the right is a breakdown of this year's tax payment.

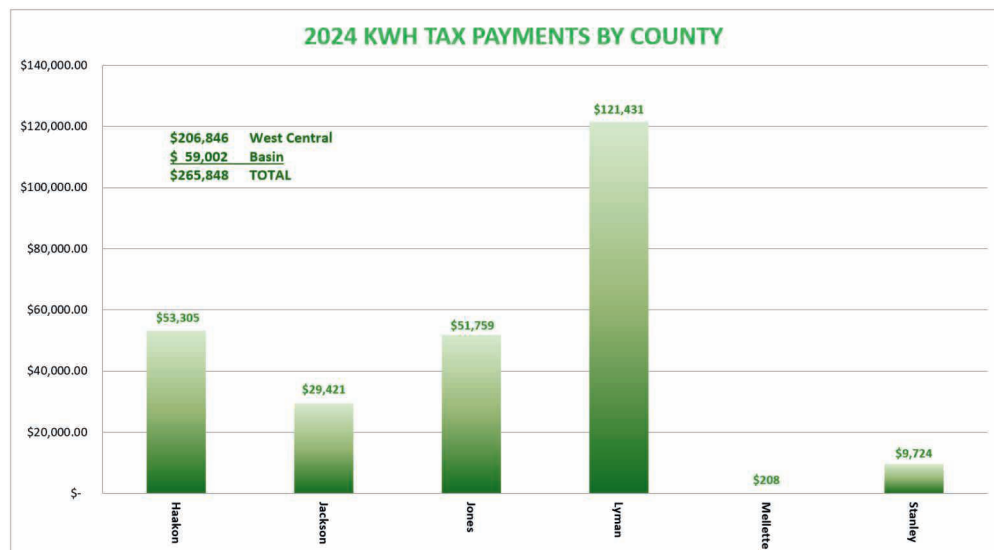
This is not the only property tax West Central pays. We also pay property tax on our buildings and land. Our 2024 property tax paid was \$33,292.

Since I'm discussing taxes, what do you think West Central paid in sales and use tax in 2024? West Central paid \$723,520 in sales and use taxes.

Keep in mind that when I say West Central paid all these taxes, what I'm really saying is West Central collected these taxes from our members, and we submitted your money to the state. So, the correct statement would be that West Central Electric members paid a total of \$1,022,660 in property, KWH, sales, and use taxes.

Have a Safe and Happy 4th of July!!

\$265,848 IN TAXES SUPPORTING OUR COMMUNITIES			
COUNTY	WCE	BASIN	TOTAL
Haakon	\$41,475	\$11,830	\$53,305
Jackson	\$22,891	\$6,530	\$29,421
Jones	\$40,271	\$11,488	\$51,759
Lyman	\$94,481	\$26,950	\$121,431
Mellette	\$162	\$46	\$208
Stanley	\$7,566	\$2,158	\$9,724
TOTALS	\$206,846	\$59,002	\$265,848



COOPERATIVE CONNECTIONS

WEST CENTRAL ELECTRIC

(USPS No. 018-988)

President

Shad Riggle, Hayes

Vice President

Kenneth Miller, Draper

Secretary/Treasurer

Marty Hansen, Philip

Directors

Rich Bendt, Kadoka

Mike McQuiston, Fort Pierre

Kevin Neuhauser, Midland

Paul Patterson, Draper

Jim Smith, Vivian

Cliff Utthe, Presho

Jim Willert, Belvidere

Attorney

David Larson, Chamberlain

CEO/Manager

Jeff Birkeland, Murdo

**Our Mission is to Provide
Safe, Reliable Service
to our Member Owners.**

West Central Electric Cooperative, Inc., is an equal opportunity provider and employer.

**Call 605-669-8100
24-hour Dispatching**

WEST CENTRAL ELECTRIC COOPERATIVE CONNECTIONS is published monthly by West Central Electric Cooperative, Inc., PO Box 17, Murdo, SD 57559. Periodicals Postage Paid at Murdo, SD 57559 and at additional mailing offices. Electric cooperative members devote \$1 from their monthly electric payments for a subscription. Nonmember subscriptions are available for \$18 annually. POSTMASTER: Send address changes to: West Central Electric Cooperative Connections, PO Box 17, Murdo, SD 57559; telephone 605-669-8100; fax 605-669-2358; e-mail wcec@wce.coop; Web site: www.wce.coop; Facebook: www.facebook.com/WestCentralElectricCooperative

Design assistance by SDREA

Kinsley Joins the Team

West Central Electric is proud to announce the hiring of pole tester/groundsman Kaden Kinsley. He started on May 12 and is based out of Murdo. He will be continuing his training and education to become a journeyman lineman.

Kaden was born and raised in Murdo, S.D., and attended all his schooling in Jones County. He enrolled at Mitchell Technical Institute (MTI) and graduated in 2025 with a Power Line Construction and Maintenance diploma. For the previous two summers, Kaden worked as summer help for West Central Electric.

He also has experience installing security systems and working at Mitchell Livestock.

When asked what he was most looking forward to on the job, Kaden said, "I will be spending a lot of time out in the Ranger and seeing and learning about the area West Central covers."

Kaden is happy to be in the Murdo area with lots of family and friends. He likes that he can still help on the family ranch when possible. His family includes his parents, Brandon and Teri, older brother Dylan and his family, and younger brother Bryer. Kaden and his girlfriend Quinn are starting their own family and expecting a baby in the fall.



Playground Safety

Source: National Safety Council

According to the Consumer Product Safety Commission, each year, more than 200,000 children go to U.S. hospital emergency departments with injuries associated with playground equipment.

As the weather warms up and trips to the park become frequent, take a moment to familiarize yourself with the risks on playgrounds and how you can prevent injuries.

Check for Playground Hazards

Nearly 80% of playground injuries are caused by falls. Watch out for these potential hazards when taking kids to the playground, and report any hazards observed.

Improper ground surfaces: Surfaces around playground equipment should have at least 12 inches of wood chips, mulch, sand or pea gravel, or mats made of safety-tested rubber or rubber-like materials. Playgrounds should be free of exposed concrete footings, rocks or tree stumps.

Overcrowded play areas: The area under and around play equipment should be a minimum of 6 feet in all directions while swing set areas should be twice the height of the suspending bar both in back and front of the swings. Structures more than 30 inches high should be at least 9 feet apart.

Unprotected elevated areas: Platforms higher than 30 inches should have guardrails or barriers.

Head entrapment spaces: Openings between rails, bars, rungs and even ropes of cargo nets should be less than 3 1/2 inches or more than 9 inches.

Sharp points and edges: Playground equipment should be free of protruding bolt ends, “S” hooks, and other sharp points and edges.

Visit the American Academy of Pediatrics webpage on playground safety to learn more.

Avoid Strangulation Hazards

The American Academy of Pediatrics cautions that children should not wear or play with anything that could get caught on equipment and become a strangulation hazard.

- Never attach or allow children to attach ropes, jump ropes, clotheslines or pet leashes to play equipment.
- Leave sweatshirts with drawstrings and necklaces at home.
- Remove bike helmets when playing on the playground.

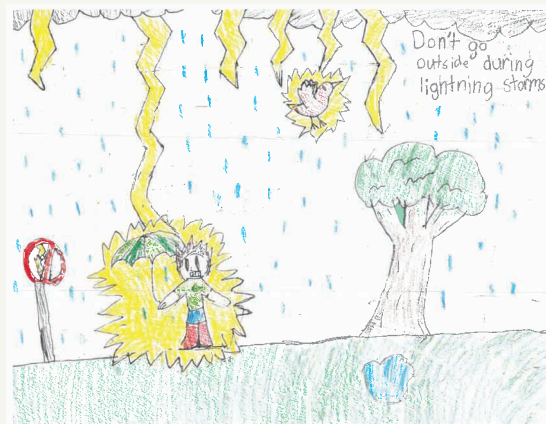
Be Cautious of Too Much Sun Exposure

Playgrounds should have full or partial sun protection between 10 a.m. and 2 p.m., peak exposure time.

- Limit playtime at peak sun exposure time and know the signs of heat illnesses.
- Avoid burns; if playground equipment is hot to the touch, it is too hot for your child’s bare skin.

Allow Only Age-Appropriate Activities

The Consumer Product Safety commission lists age-appropriate equipment in the Public Playground Safety Handbook. There is no substitute for parental supervision, especially for young children.



"Don't go outside during lightning storms!"

Marah Kinnunen, Age 8

Marah warns readers about the dangers of going outside during a lightning storm. Thank you for your picture, Marah! Marah's parents are Reuben and Sarine Kinnunen from Hayti, S.D.

Kids, send your drawing with an electrical safety tip to your local electric cooperative (address found on Page 3). If your poster is published, you'll receive a prize. All entries must include your name, age, mailing address and the names of your parents. Colored drawings are encouraged.

Delectable CHICKEN

CHICKEN MILANESE

Ingredients:

1 pkg. McCormick® Chicken Parmesan One Sheet Pan Seasoning Mix
1/4 cup grated Parmesan cheese
1 lb. thin-sliced boneless skinless chicken breasts
1 tbsp. oil

Method

Preheat oven to 400°F. Empty Seasoning Mix into shallow dish. Add Parmesan cheese. Brush chicken with oil. Coat evenly on both sides with Seasoning Mix. Discard any remaining Seasoning Mix.

Place chicken in single layer on foil-lined shallow baking pan sprayed with no stick cooking spray.

Bake 15 minutes or until cooked through, turn chicken halfway through cook time.

Mccormick.com

SWEET AND SOUR CHICKEN

Ingredients:

3 boneless, skinless chicken breasts
2 tbsps. fat or oil
1/4 cup water
2 tbsps. cornstarch
1/2 tsp. salt
1/4 cup brown sugar
1/4 cup vinegar
20 oz. can pineapple chunks (drained, reserving juice)
3 tbsps. soy sauce
3/4 cup green pepper strips
1/4 cup onion (thinly sliced)

Method

Cube chicken into one inch squares; brown in fat. Add water. Cook in water until tender. In another pan combine cornstarch, salt, brown sugar, vinegar, pineapple juice and soy sauce.

Cook until slightly thick, stirring constantly. Pour sauce over hot chicken. Let stand at least 10 minutes. Add green pepper, onion, and pineapple chunks. Cook two to seven minutes until warmed through. Serve over hot rice. *Makes 4 servings.

Jan Grage
Clay-Union Electric Member

CHICKEN POT PIE

Ingredients:

1 pkg. prepared pie crust (top and bottom)
1/3 cup butter or margarine
1/3 cup chopped onion
1/3 cup all-purpose flour
1/2 tsp. salt
1/4 tsp. pepper
1 3/4 cup Progresso™ chicken broth (from 32 oz. carton)
1/2 cup milk
2 1/2 cup chicken/turkey (shredded, cooked)
2 cups frozen mixed vegetables (thawed)

Method

Heat oven to 425°F. Prepare pie crusts as directed on box for two-crust pie using nine inch glass pie pan. In two quart saucepan, melt butter over medium heat. Add onion; cook two minutes, stirring frequently, until tender. Stir in flour, salt and pepper until well blended.

Gradually stir in broth and milk, cooking and stirring until bubbly and thickened. Stir in chicken and mixed vegetables. Remove from heat. Spoon chicken mixture into crust-lined pan. Top with second crust; seal edge and flute. Cut slits in several places in top crust. Bake 30 to 40 minutes or until crust is golden brown. During last 15 to 20 minutes of baking, cover crust edge with strips of foil to prevent excessive browning. Let stand five minutes before serving.

Cindy Foster
Codington-Clark Electric Member

Please send your favorite recipes to your local electric cooperative (address found on Page 3). Each recipe printed will be entered into a drawing for a prize in December 2025. All entries must include your name, mailing address, phone number and cooperative name.

Efficiency Tips for Older Homes



Miranda Boutelle
Efficiency Services
Group

Q: How do I improve the efficiency of my older home while keeping its charm?

A: I love old homes. The details and craftsmanship have always drawn me to them. The features of older homes can make them less efficient than modern construction, but it doesn't have to be that way. You can keep the charm and make your home more efficient.

Start by prioritizing the invisible upgrades that make your home more comfortable and efficient. When we were kids, I don't think any of us thought, "When I grow up, I want to spend my hard-earned money on insulation." It's not as exciting as new countertops or a remodeled bathroom, but air sealing and insulation can save you money every month. Then you can apply the savings to aesthetic improvements.

Many older homes are not properly insulated. Insulation has several benefits beyond sealing your home and keeping outdoor air from seeping in. It reduces outdoor noise, makes your home quieter and improves your overall comfort.

Always properly air seal before you insulate. Older homes with pocket doors, coved ceilings, dumbwaiters, doors to attic spaces and laundry chutes allow indoor air to escape through the cavities, gaps and cracks around these classic features. Sealing off open cavities around those features often requires plywood, rigid foam or drywall fastened into place and then caulked around the edges.

Keep an eye out for framing features that cause drafts. Balloon framing is a type of construction where wall studs run all the way from the foundation to the roof, allowing air to flow freely through those spaces. Second floors with knee wall attics on both sides are notorious for air leakage. Open cavities allow air to flow horizontally between the attic spaces, making the home uncomfortable and inefficient. Seal off the open cavities in the floor framing and insulate attic spaces.

Dense-packed cellulose or closed cell foam insulation can be sprayed into exterior walls. Skilled contractors can remove pieces of siding and drill holes to fill the wall cavities from the outside of the home.

For brick or stone homes, holes can be drilled from the inside and then patched and painted. Insulating walls from the inside of the home requires more time and effort in preparation and cleanup, but having well-insulated walls is worth it.

Knob and tube wiring – commonly used from the early 1880s to the 1930s with no grounding wire – should be replaced prior to insulating walls and attics for safety purposes. Contact between insulation and knob and tube wiring can create a fire hazard.

People often think new windows are the best way to improve a home's efficiency. Considering the cost of replacing windows, I recommend investing in air sealing and insulation first. Then consider storm windows to keep the charm of the original windows, such as leaded glass and stained-glass windows in good condition. Choose from interior or exterior options that are operable and inoperable.

Once you've addressed the envelope of your home, consider appliance improvements. Replace your old electric water heater with a heat pump water heater. This upgrade can save a family of four an estimated \$550 per year and more than \$5,600 over the lifetime of the water heater, according to ENERGY STAR®.

Invest in high-efficiency heating and cooling equipment. A mini-split heat pump, also known as a ductless heat pump, is a more efficient option than electric baseboard heating and provides the benefit of air conditioning.

Older homes don't have to be inefficient. Show your home some love and invest in energy efficient upgrades.





YOU GOTTA HAVE A FIDDLE IN THE BAND

Keeping Old-Time Music Alive One Jam at a Time

Frank Turner

frank.turner@sdea.coop

“If you’re gonna play in Texas, you gotta have a fiddle in the band,” the classic Alabama song goes — and South Dakota is no exception. The Fiddlers of South Dakota, a group of traveling fiddle enthusiasts and musicians, carry that spirit, bringing the joys of acoustic music and an old-time charm to parades, festivals and hometown celebrations across the state through the summer months.

One of these traveling musicians, Ken Nelson of South Shore who joined the group in 2010, describes the group as a “loose-knit group of people who like to get together and jam.” In total, the group has more than 30 members from eastern South Dakota and western Minnesota. And it’s not just fiddlers — the ensemble includes other acoustic instruments, including mandolin, bass, banjo and harmonica.

According to Nelson, the group’s repertoire draws from old-time traditions — breakdowns, waltzes, reels and jigs — the kind of music once played on porches, at barn dances and around campfires.

The Fiddlers of South Dakota
playing old-time tunes at
Newton Hills State Park.
Photo submitted by Ken Nelson

“You could call it old-time music,” Nelson said. “It’s not really bluegrass or folk music. It’s hard to describe it until you hear it.”

Whether the song is an Irish jig or a Croatian polka, Nelson said the music never fails to connect with the audience.

Nelson said that connection is what drives these musicians to travel hundreds of miles to gigs across the state — from Fort Sisseton’s Historic Festival to the Laura Ingalls Wilder Pageant in De Smet, to Prairie Village’s Annual Steam Threshing Jamboree in Madison. It’s not a living, he said, but more of a passion — a way to stay connected to music, to community, and to his fellow fiddlers.

“We play everywhere we can,” he said. “And everybody enjoys it. We usually only make enough money to pay for the gas but that’s all we really care about.”

“Once We played for Potato Days over in Clark,” Nelson laughed. “We were set up right next to the potato wrestling pit. We had to make sure we were sitting far enough back so that when mashed potato started flying, we didn’t get splashed.”

The Fiddlers of South Dakota expect to perform next at the Laura Ingalls Wilder Pageant in De Smet in July. Nelson said the public is not only welcome to attend the show, but acoustic string players of all ages are encouraged to join the organization’s jam sessions and informal performances such as at Luce Cabin at Lake Herman State Park or after their performance in Fort Sisseton.

“We’re always trying to incorporate new players into the group,” he said. “Sometimes young students come and play with us, and they’re always welcome. It’s fun and humbling to have young players, sometimes as young as 10 or 11, join in, because, if you don’t include the young people, it’s not going to last.”



SOUTH DAKOTA STAR QUILTS

Moreau-Grand Electric Cooperative directors present retiring manager Melissa Maher (left) with a star quilt.
Photo by JJ Martin

Honoring Cooperative Legacy With Time-honored Tradition

Frank Turner

frank.turner@sdfa.coop

Across the prairie, few gifts carry as much meaning as a star quilt. For many, these quilts are more than just blankets – they are acts of honor. Rooted in Native American culture, particularly among Lakota, Dakota and other tribes of South Dakota, star quilts have long been used to mark some of life’s largest milestones, including graduations, marriages, memorials and moments of deep community respect.

Electric cooperative leaders Donovan Young Man, a former director of Lacreek Electric who was honored shortly before his passing earlier this year, and Melissa Maher, the former manager of Moreau-Grand Electric Cooperative, recently accepted star quilts from their cooperatives in recognition of their many years of service to their member-owners.

So what makes the star quilt such an honor? According to International Quilt Museum Collections Manager Jamie Swartz, the quilts are special because they take an incredible amount of skill and experience to assemble.

Many star quilts are block quilts, constructed from dozens or even hundreds of small fabric pieces carefully cut and stitched together. At the heart of the design is an eight-pointed star, a

shape that demands near-perfect precision.

“There are so many small pieces that make up a star quilt,” Swartz said. “When you are combining so many small pieces together to make a large, over-all design, there is more room for error. A small mismeasurement can create bumps, ripples or puckers in the patchwork.”

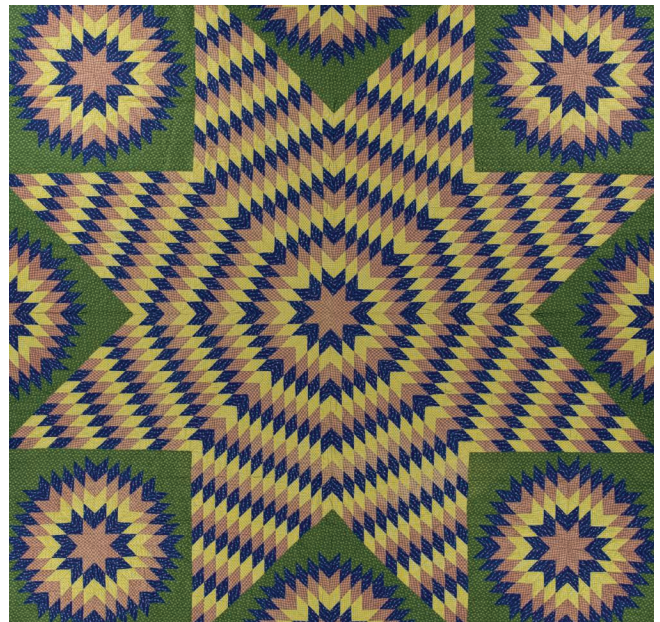


Photo Courtesy of the International Quilt Museum, University of Nebraska-Lincoln, 1997.007.0123

That level of precision, care and time-honored tradition a star quilt represents is a part of what makes it such a meaningful gift. In recent years, the practice of gifting star quilts has been embraced by some electric cooperatives as a way to express a deep appreciation for their employees who have dedicated a lifetime of work to their cooperatives and communities.

Remembering Donovan Young Man

Before his passing earlier this year, Donovan Young Man was honored by his cooperative at the Lacreek Electric annual meeting with a star quilt for his 31 years of service to Lacreek Electric, serving as a director for both his cooperative and the South Dakota Rural Electric Association. Specifically, the cooperative honored Donovan's commitment to both his cooperative and community.

Lacreek Electric CEO Josh Fanning said Young Man was known for both his calm and steady presence, and his exceptional ability to bridge tribal relations, fostering understanding and unity within the community.

In his community, Donovan was known for his profound impact on his community's youth. For 41 years, he devoted himself to the Oglala Lakota County School District, leaving a lasting legacy of dedication, education, and empowerment for the youth. Beyond education, Donovan served his community in many other ways, including as a member of the Oglala Sioux Tribal Council.

"Donovan had a lasting impact on our cooperative," Fanning said. "His wisdom, leadership, and steady guidance helped shape its direction and strengthen its foundation. His contributions will be remembered and felt for years to come."

"We chose a star quilt because gifting one is a deeply meaningful gesture in our area – an expression of profound respect, honor and the warmth of community," Fanning continued. "In many Indigenous cultures, the star quilt represents the highest form of recognition, symbolizing heartfelt gratitude for the recipient's enduring contributions. It also serves as a guiding light, reflecting the inspiration and direction they provide for future generations."

Honoring Melissa Maher

Moreau-Grand Electric honored Melissa Maher with a star quilt at the co-ops annual meeting in October for her 40 years of service at the cooperative. In addition to Maher, the cooperative also presented Larry Hieb with a quilt for his 55 combined years of service as both an employee and director.

Maher joined the cooperative in 1984 as manager's secretary. Through the years, Maher remained with the cooperative, serving as the member service director and later Moreau-Grand Electric's manager, the first woman to hold this title.

"I've always loved star quilts, what they stand for – the celebration and honoring of someone with an heirloom that they can enjoy for hopefully generations to come," she said.

Maher first experienced the star quilt tradition through her



Lacreek Electric employees gift director Donovan Young Man a star quilt to celebrate his 31 years of service to the electric cooperative.

Photos by Mandy Scherer



mother, who taught kindergarten at Cheyenne-Eagle Butte School. As a teacher in the Eagle Butte community, her mother received star quilts from several of her students' families.

Seeing the joy it brought her mother, Maher continued the star quilt tradition into her years at the cooperative, gifting quilts to retirees of the cooperative, gifting dozens of star quilts made by quilt maker Bonnie LeBeaux to employees of the co-op, honoring retirements, directors, and even key members of the construction crew that helped build the new Moreau-Grand Electric office.

"It's hard to guess how many star quilts I have gifted over the years," Maher said. "Probably dozens if I had to guess."

The tradition came full circle at her retirement party when Moreau-Grand Electric presented Mellisa a star quilt of her own.

"We wanted to honor her 40 years of service and highlight abilities as a manager," said Paul Lawrence, a director of Moreau-Grand Electric. "It's a way of conveying that she led with honor and integrity, and she did exactly that."

AG APPRECIATION AT THE CENTRAL STATES FAIR

We invite you to the 3rd Annual Ag Appreciation event held **August 18th, from 5:00pm - 6:30pm, at the Monument Health Stage** inside the fairgrounds! These outstanding individuals and business have made lasting contributions to their communities and the agriculture industry, and this is our chance to say 'thank you' for their unwavering commitment.

A complimentary meal will be served from 5pm - 6pm, with a short program to follow. Enjoy FREE fair entrance* and be entered into a drawing to receive one of two, two-pack PREMIER passes to an event at the fair.

***Must enter on LaCrosse Street and present ticket at the gate entrance for free fair entrance.**

2025 RURAL NEIGHBOR NOMINEES

2025 Agribusiness Award
Sponsored by:

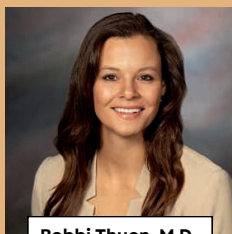


ELEVATE
RAPID CITY



Marty Hansen

2025 Rural Neighbor Award
Sponsored by:



Bobbi Thuen, M.D.

2025 Rural Health Care Neighbor Award
Sponsored by:



Tif Robertson

2025 Rural Neighbor Award
Sponsored by:



AG APPRECIATION EVENT TICKET

- Present this ticket at the LaCrosse St. gate entrance for FREE fair entrance.
- Present this ticket at the Appreciation event entrance for a meal ticket.

*Ticket is good for self + immediate family members only.



ENERGY EFFICIENCY TIP OF THE MONTH

During summer months, run large appliances that emit heat such as clothes dryers and dishwashers during the evening when the outdoor temperature is lower. Running heat-emitting appliances in the evening will reduce indoor heat gain during the day when outdoor temperatures are highest and ultimately keep your air conditioner from working harder than necessary.

Source: [energy.gov](https://www.energy.gov)



We're Ready for Storm Season. Are You?



Jessie Tucker
Member Services

Now that summer is in full swing, like many of you, I welcome more opportunities to be outdoors and enjoy the warmer weather. Summertime brings many of my favorite activities like cooking out with family and friends, afternoons on the water, and simply slowing down a bit to enjoy life.

But summer months also make conditions right for dangerous storms. These potential weather events can cause destruction to our electrical system, but I want you to know that West Central crews are ready and standing by to respond should power outages occur in our area.

When major storms knock out power, our line crews take all necessary precautions before they get to work on any downed lines. I would also encourage you to practice safety and preparedness to protect your family during major storms and outages.

The Federal Emergency Management Agency recommends the items below as a starting point for storm and disaster preparedness, but you can visit www.ready.gov for additional resources.

- Stock your pantry with a three-day supply of non-perishable food, such as canned goods, energy bars, peanut butter, powdered milk, instant coffee, water, and other essentials (i.e., diapers and toiletries).
- Confirm that you have adequate sanitation and hygiene supplies, including towelettes, soap, and hand sanitizer.
- Ensure your First Aid kit is stocked with pain relievers, bandages, and other

medical essentials, and make sure your prescriptions are current.

- Set aside basic household items you will need, including flashlights, batteries, a manual can opener and portable, battery-powered radio or TV.
- Organize emergency supplies, so they are easily accessible in one location.

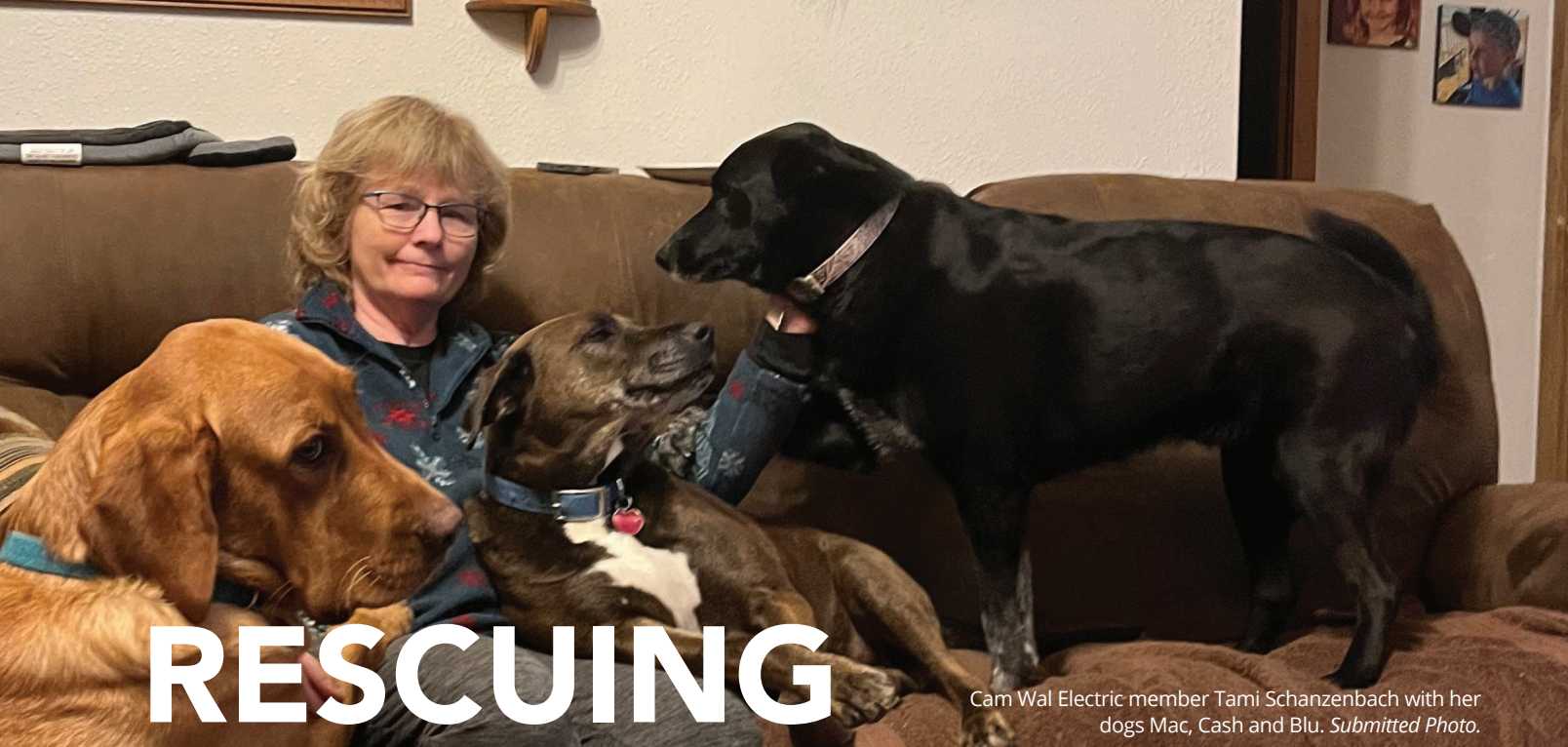
In the event of a prolonged power outage, turn off major appliances, TVs, computers, and other sensitive electronics. This will help avert damage from a power surge and help prevent overloading the circuits during power restoration. That said, do leave one light on so you will know when power is restored. If you plan to use a small generator, make sure it's rated to handle the amount of power you will need, and always review the manufacturer's instructions to operate it safely.

Listen to local news or a NOAA Weather Radio for storm and emergency information, and check West Central's Facebook page or website for power restoration updates.

After the storm, avoid downed power lines and walking through flooded areas where power lines could be submerged. Allow ample room for utility crews to safely perform their jobs, including on your property.

Advance planning for severe storms or other emergencies can reduce stress and anxiety caused by the weather event and can lessen the impact of the storm's effects. Sign up for NOAA emergency alerts and warnings, and like our Facebook page today to stay abreast of power restoration efforts and other important co-op news and information.

I hope we don't experience severe storms this summer, but we can never predict Mother Nature's plans. At West Central, we recommend that you act today because there is power in planning. From our co-op family to yours, we hope you have a safe and wonderful summer.



Cam Wal Electric member Tami Schanzenbach with her dogs Mac, Cash and Blu. *Submitted Photo.*

RESCUING ANIMALS

Co-op Members Foster and Support Pets In Need

Jacob Boyko

jacob.boyko@sdrea.coop

Tami Schanzenbach has always wanted to help animals.

From her earliest days in Aberdeen where she worked as a veterinary technician and helped start the Aberdeen Area Humane Society, to her later Pets N Stuff store in Mobridge, Tami's focus has always been on humans' furry companions and getting them into loving homes.

And even after a long career and a so-called retirement, she still finds ways to help. Through the Wamakaskan Onisca Humane Society, she opens her home to animals in need.

"I'm a foster failure," Tami laughed, admitting three of her own beloved pet dogs were originally supposed to be adopted out.

Served by Cam Wal Electric, Tami's home near Selby is the halfway point for countless animals on their journey from neglect, abuse and homelessness to their forever homes.

"If I have a person that calls me, if someone has found a dog, I ask initially

if they're able to help me with taking care of that dog for a little bit until we can determine whether it belongs to somebody," she explained.

The pets will go to a foster home for the time being — Tami credits volunteers like her friend Annie Walker, a member of Moreau-Grand Electric from the McIntosh area, for stepping up and opening her home to foster animals.

"One day, Tami had a picture of a litter of puppies that needed to be bottle fed," Walker said about her first fostering experience.



Annie Walker with rescue, Layla. *Submitted Photo.*

I keep taking some animals from time to time."

If the dog isn't claimed, the rehoming process begins, starting with veterinary care.

"We go through and we vaccinate and treat the animal and do what's needed to be able to make that puppy or dog available for adoption," Tami continued.

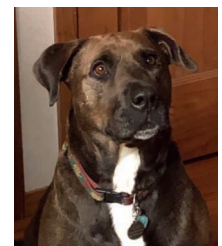
Sadly, the circumstances in which she receives them usually aren't pleasant.

The pets come from around Selby, many from the Standing Rock and Cheyenne River reservations, where they're often found abandoned. Tami recalls coming upon shocking discoveries, like "bait dogs" used to train fighting dogs in the Bismarck area.

"People will steal puppies and kitties and train their pitbulls for fights, and they have a dog that's called a bait dog," she explained. "And that you see in our area as well ... days where [multiple] people are missing their dogs. People are coming in and stealing them and using them as bait dogs."

That's what Tami suspects happened to Cash, a 7-year-old pitbull/lab cross found "in the middle of nowhere" covered in pellet shots and bite marks.

"It took a long time for him to trust and know he's going to be okay here," Tami said. "And I don't



Cash, who was used as a "bait dog," was adopted by Tami. *Submitted Photo*

blame him, because he's never been taken care of.

Tami has made it her mission to end the cycle of animal neglect and abuse where she's able by sterilizing the pets coming into her care before they're adopted out. She also sponsors sterilizations for other peoples' pets.

"We just had about 12 dogs that we sponsored to be spayed at the local vet," she said. "We had a lady that helped me with a donation and wanted it geared toward people that couldn't afford to have their animals spayed and neutered ... We have so many people that always have two litters per year."

Stopping the cycle also means barriers to adoption – if someone isn't a good fit, there's a chance that animal will be surrendered back to the rescue and the process will start from the beginning.

Tami conducts interviews with potential pet owners with hopes of finding a perfect match.

She added that she sometimes steers people with busy and demanding schedules away from getting dogs. A cat – famously independent – is often a better fit, she said.

Tami also employs sustainable adoption practices she says make for better-behaved dogs – eight weeks is generally the earliest age when she'll allow adoptions to occur.

"We have puppy socialization that occurs" when the puppies are little, she explained. "They wrestle and play with their siblings, and they create a lot of socialization that way. And there's a lot of research that has proven that if you keep them with their siblings during that period of time, they make a heck of a lot better dog going forth, because they've been through that socialization."

Jen Uecker, Board President of the Pierre/Fort Pierre Area Humane Society, also known as Paws Animal Rescue, says without volunteers like Tami and Annie, shelters like hers would be overrun and rescuing animals from abandonment wouldn't be possible.

"We rely heavily on volunteers to help ease the burden of our limited staff and resources," Uecker said. "The foster volunteers open their home to these animals not really knowing a whole lot

about them, their demeanor, where they came from, or anything, and they open their homes to help them feel comfortable and confident until they're ready for their new forever family."

Tami encourages people to volunteer, support their local rescues, adopt if they're able and above all, love their pets.

"There are a lot of dogs and cats and it's just not their fault – they get the bad end of things," Walker said. "Tami is super dedicated ... She's always willing to step in and help these animals find a better life."

For Tami, it all comes down to giving that love back.

"They provide unconditional love to humans, and sometimes we forget that," she said. "We work all day ... When you come home, you need to spend some time with your pets."

HUMANE SOCIETY & SANCTUARY DIRECTORY

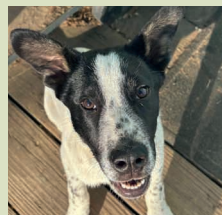
Wamakaskan Onsica (Mobridge).....	(605) 850-8430
Paws Animal Rescue (Pierre).....	(605) 223-2287
Sioux Falls Area Humane Society.....	(605) 338-4441
Humane Society of the Black Hills (Rapid City)....	(605) 394-4170
Battle Mountain Humane Society (Hot Springs)....	(605) 745-7283
Beadle County Humane Society (Huron).....	(605) 352-8955
Aberdeen Area Humane Society.....	(605) 226-1200
Glacial Lakes Humane Society (Watertown).....	(605) 882-2247
Brookings Regional Humane Society.....	(605) 697-7387
Western Hills Humane Society (Spearfish).....	(605) 642-1576
Heartland Humane Society (Yankton).....	(605) 664-4244
Siouxland Humane Society (Sioux City).....	(712) 252-2614
Mitchell Animal Rescue.....	(605) 770-2170
Oglala Pet Project (Kyle).....	(605) 455-1518
Wakpá Wašté Animal Shelter (Eagle Butte).....	(605) 964-7387
Fur and Purr Cat Shelter (Milbank).....	(605) 432-4505
Lake Traverse Animal Rescue (Sisseton).....	(605) 742-0219

Tami says her most rewarding rescue was Fez, an 8-week-old shepherd/collie cross found with mange, a skin disease caused by mites. She said she refused to give on Fez, who is now a healthy dog with a full coat of hair.
Submitted Photo.

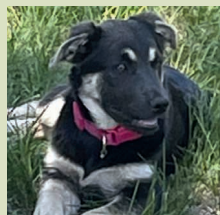


Looking for a new home...

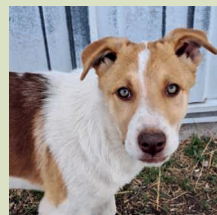
(plus many more)



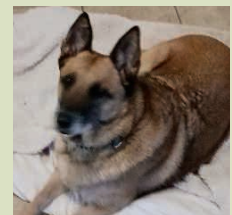
Buddy



Margot



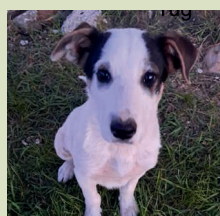
Chopper



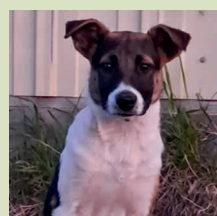
Eliza



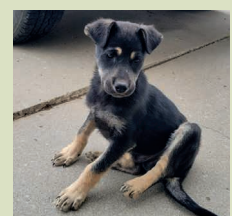
Agnes



Tug



Scooter



Leo



Central Electric Cooperative's distribution lines power members' farms and ranches throughout much of Central South Dakota.
Photo by Jacob Boyko

REMEMBERING WHEN THE LIGHTS CAME ON

Central South Dakota Rancher Looks Back to Days Before Power

Jacob Boyko

jacob.boyko@sdrea.coop

Near Big Bend Dam in central South Dakota, farmer and rancher Clayton Knippling works the same land his father and grandfather had decades before.

The work he and his wife, Evelyn, and two sons do on the sprawling acre family ranch looks very different than it did back then, though. That's because today the ranch has electricity.

Back in the 1940s and early 1950s,

having electricity was a luxury enjoyed almost exclusively by people in towns and cities, or rural folks who happened to live along major highways. With their homestead several miles northeast of Fort Thompson, the Knippings understood their odds of getting connected to a utility were slim for the time being. Their lives were powered by an old diesel generator out in the barn – enough to keep the kitchen refrigerator humming and a couple of light bulbs lit.

“I remember being told, ‘Shut that

refrigerator door! You're wasting cold air!’” Knippling laughed, thinking back to that overworked generator.

But as soon as the electric cooperative crews visited the ranch, that generator was permanently retired and would never run again.

Knippling thought back to that day in the early 1950s when he was about six years old. He remembers watching the trench-diggers from Tri-County Electric – merged into Central Electric in 2000 – trench their way to each outbuilding. Hours later, he would see those buildings shining bright in the darkness for the first time ever.

Having electricity didn't change the work out in the fields. Knippling said a lot of the work is the same in 2025 as it was in 1955. But back at the homestead, Tri-County Electric brought the Knippling ranch into the

20th century.

“We even had a welder after that,” Knippling recalled. “That took 220 volts, and I don’t think our old generator was putting off that. We could then fix our own iron.”

Electricity was a game-changer for the Knippings’ water needs. Seizing the opportunity, they dug a new, deeper well with an electric pump for better quality water and ran lines out to each building.

“[Before we had electricity] there was a stool and a nail where a tin cup sat, and there was a bucket of water and everybody that came through would drink out of that cup, so if somebody got a cold, we all got it,” Knippling laughed.

“Electricity allowed us to put in a pressure tank and then run the water lines to every house so we weren’t carrying a bucket anymore.”

The ranch also transitioned to all-electric pivot irrigation and pumps along the Missouri River. Today, Knippling Land and Cattle

irrigates 1,300 acres of farm land – an unimaginable figure before there was co-op power.

In the winter, the new electric block heaters for the diesel engines ensured there was always at least one tractor that would start up.

Life was just a little bit brighter, warmer and simpler with co-op power.

An advocate for rural life and progression, Clayton has also served the last 42 years on the board of directors for Midstate Communications, the local member-owned telecom cooperative, in an effort to equalize the disparities between urban and rural life.

“It changed the world back in the ‘50s when electricity came,” Clayton said. “A lot of kids left the farm because it was too rural. If you came from a farm, you didn’t want to come back. After electricity came, it became easier for younger people to stay on the farm.”



Clayton Knippling farms and raises cattle southeast of Fort Thompson on the same ranchland where he grew up, just 15 miles from his childhood home where Tri-County Electric first hooked up their power in the early 1950s.

Photo by Jacob Boyko



Pivot irrigation systems, like the one shown here along S.D. Highway 50 southeast of Fort Thompson, use electricity to rotate on a center pivot. Use of the systems can increase yields while reducing wasted water.

Photo by Jacob Boyko

REGISTER TO WIN!

Bring this coupon and mailing label to the Touchstone Energy® Cooperatives booth at Dakotafest or the South Dakota State Fair to win a prize!

Your Phone Number: _____

Your E-mail Address: _____



Photo courtesy of Travel South Dakota

To have your event listed on this page, send complete information, including date, event, place and contact to your local electric cooperative. Include your name, address and daytime telephone number. Information must be submitted at least eight weeks prior to your event. Please call ahead to confirm date, time and location of event.

JUNE 20-21
Volunteer Fire Dept. Car Show
Fri. Cruise Night, Sat. Car Show
Marion, SD
Brad Schardin
605-413-5653

JUNE 25-28
Crystal Springs Rodeo
Clear Lake, SD
605-874-2996

JUNE 27-28
Buckhorn Rodeo
Britton, SD
605-880-5077

JUNE 27-29
Leola Rhubarb Festival
Leola, SD

JUNE 27-29
Bowdle Tower Days
Bowdle, SD

JULY 1-5
106th Annual Black Hills Roundup
Rodeo, Parades, Concerts & Fun
Belle Fourche, SD

JULY 4
Philip Volunteer Fireworks
Annual Display
Lake Waggoner
Philip, SD

JULY 11-12
Frontier Days
White River, SD

JULY 12
39th Annual Spearfish
Canyon Half Marathon & 5K
7 a.m.
Spearfish, SD
605-722-4558

JULY 12
Friendship Days Vendor Market
BBQ Cook Off, Prize Raffle
10 a.m.-4 p.m.
White Lake, SD

JULY 17-20
Danish Days
Daneville Heritage Museum
Viborg, SD
danevilleheritage.com

JULY 19
6th Annual Wakonda
American Legion Tractor Pull
3 p.m. Start
4 p.m. Kids Pedal Pull
Wakonda, SD

JULY 19-21
Burke Stampede Rodeo
Stampede Arena
Burke, SD
605-840-0824

JULY 25-27
Winner Elk's 56th Annual Rodeo
to Benefit LifeScape
Tripp Co. Fairgrounds
Winner, SD
605-842-5830

JULY 25-27
Clear Lake Days
Clear Lake, SD
ClearLakeDays.com

JULY 26
Planes, Trains, & Automobiles
Car Show, Train Rides, Flyovers
10 a.m.-5 p.m.
Prairie Village
Madison, SD

JULY 26
South Dakota Chislic Festival
10 a.m.-9 p.m.
Freeman, SD
www.sdchislicfestival.com

JULY 26
Richmond Lake Association's
Annual Pontoon Poker Run
Aberdeen, SD
605-225-0609

AUG. 7-10
South Dakota Senior Games
Huron, SD
605-295-2039
southdakotaseniorgames.org

Note: We publish contact information as provided. If no phone number is given, none will be listed. Please call ahead to verify the event is still being held.